

17 November 2016  
Porto, Portugal

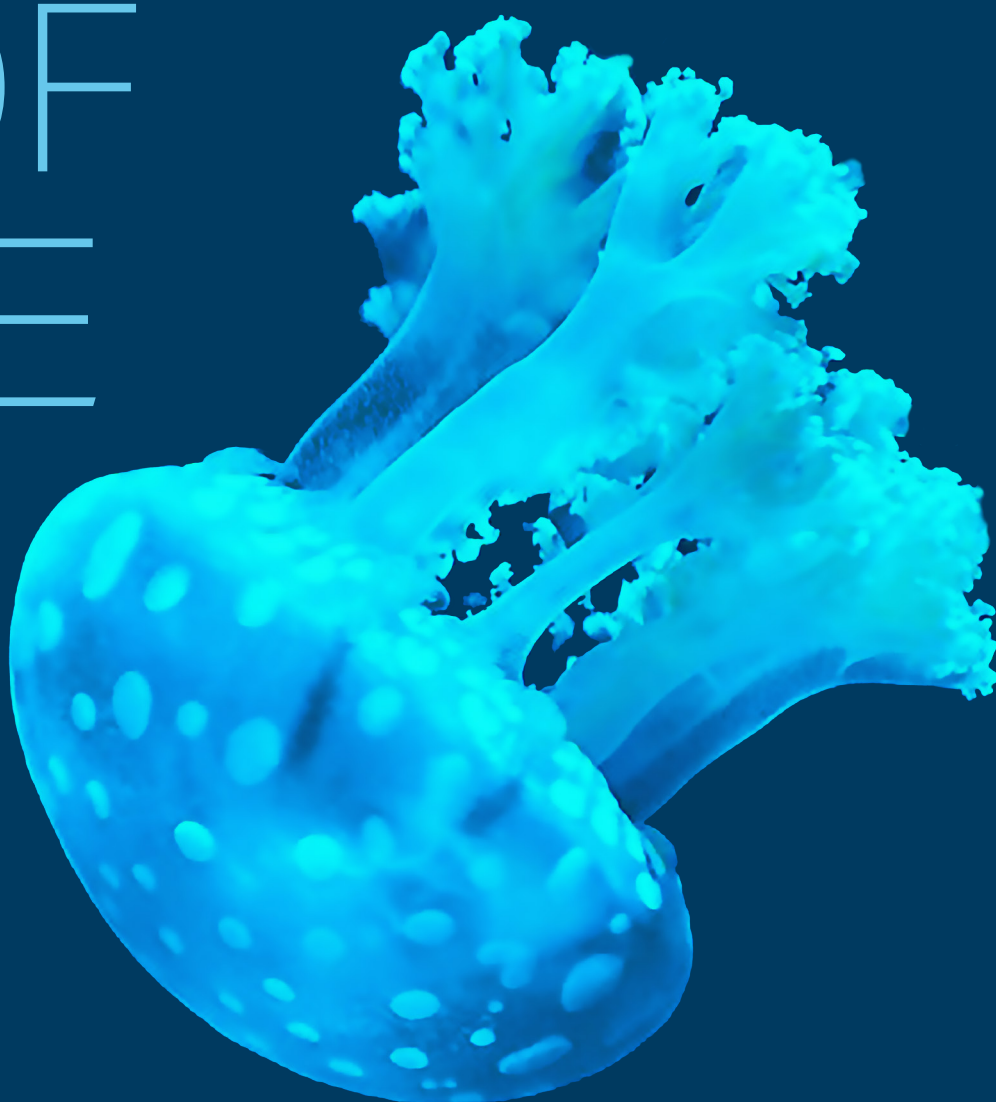
Centro de Congressos  
da Alfândega do Porto



STRONG  
MAR

# 2016 STRONGMAR CONFERENCE

A SEA OF  
SCIENCE



ORGANIZER



INESC TEC  
TECNOLOGIA E CIÊNCIA  
LABORATÓRIO ASSOCIADO

PARTNER



FORUM  
OCEANO  
Associação de Economia do Mar

[www.strongmar.eu](http://www.strongmar.eu)

THE STRONGMAR PROJECT IS FUNDED BY THE  
EUROPEAN COMMISSION UNDER THE H2020 EU  
FRAMEWORK PROGRAMME FOR RESEARCH AND  
INNOVATION (H2020-TWINN-2015, 692427).

